

COORDINATES

technology to support Decision Making about Aging at home

IMPACT ON CIVIL SOCIETY

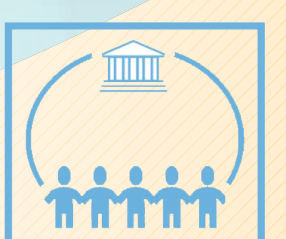
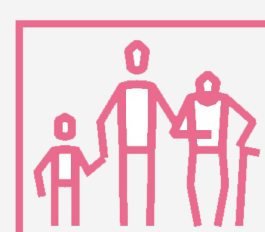
Older adults with early stage dementia who are losing autonomy, as well as their informal and formal caregivers, sooner or later face a difficult and preference-sensitive housing decision: to stay at home or move into a nursing home.

In fact, this decision may have to be faced repeatedly as autonomy diminishes. The fact that most older adults prefer to stay in their own homes and communities, is a challenge for society as estimates of life expectancy increase yet living with disability has not decreased, and 20-40% of older adults will suffer from a form of dementia during their lifetime.

Once people with dementia begin to get lost outdoors on their own there is a strong incentive to confine them in their homes or commit them to nursing homes, even against their will. Governments are important players in this decision as they decide what resources to commit to home care versus institutional care. Most older adults are not always aware of the options that would enable them to continue living at home.

Person-centred care promotes autonomy, authority and choice among receivers of care, and is key to the next generations of health reforms. Shared decision making (SDM) is its cornerstone, and is especially important in preference-sensitive decisions. SDM requires information equality between those who are involved, including at least knowledge of options, and risks and benefits of the options.

In COORDINATES, we will, together with end-users (older adults, caregivers, health professionals, policy makers, technology partners), study how technology can be adapted to enable self-management in older adults in three countries and inform all those involved in SDM processes about housing options. The project will address current challenges for seniors with dementia who are living at home, with regard to their involvement in decision-making about care, the use of technology to support self-management and inform decision-making, and ethical aspects associated with this.



SUMMARY

COORDINATES is 3-year multiple-case, mixed-methods study in Canada, Sweden and the Netherlands that aims to 1) assess autonomy and mobility of older adults with early-stage dementia living at home, 2) co-design technology that facilitates self-management and 3) inform shared decision-making processes about housing options for all those involved.

COORDINATES is organized in four work packages:

WP1: Mixed-methods with GPS-tracking, travel diaries, walking- and in-depth interviews with older adults with early stage dementia and their informal caregivers to assess autonomy and mobility of older adults in their homes and neighbourhoods

WP2: User-centred co-design using iterative consensus process to co-design an enhanced version of a health tracking platform

WP3: Mixed methods with real-time GPS tracking and data generated by the adapted TakeCare platform, quantitative surveys, and in-depth interviews, to assess use of the enhanced platform and perform a larger feasibility survey.

WP4: Exploratory triangulated design to triangulate and compare data from all WPs and countries.

CONSORTIUM

The consortium consists of outstanding researchers from institutions in Canada, the Netherlands and Sweden, with expertise in Shared Decision Making, caregivers and older adults with dementia, social demography and cultural geography, architecture, as well as required research methods. End-users (e.g. older adults, caregivers, health professionals, other experts, private partners) will be involved in the design, the execution and interpretation/analysis phase of the research, and in the improvement of tools.

Private partner: Greybox Solutions Inc.

Team leaders in Europe are: Dr. Mirjam Marjolein Garvelink, Dr. Marie Elf and Dr. Louise Meijering

Team leader in Canada is Dr. France Légaré

Project duration and budget

Project duration: 36 months

Budget: 760.847 euro

