

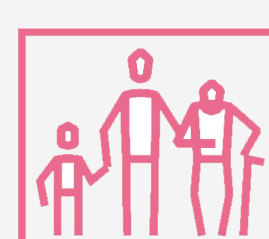
# CREW

## Care, retirement and wellbeing of older people across different welfare regimes

### IMPACT ON CIVIL SOCIETY AND POLICY

Our project will produce an impact on civil society and policy in four main areas:

- 1) Better understanding of the determinants of health and wellbeing. Understanding the determinants of health and well-being at older ages going beyond traditional measures and explanations is not only an intellectual exercise: it can be a useful guide for policies. Our study will help identify groups most at risk of suffering in terms of health and wellbeing.
- 2) Assessing the consequences of caregiving. Given the high proportion of older people providing either grandchild or elder care, our research will inform policy makers on the wellbeing consequence of a common activity that is likely to rise in the future as populations age.
- 3) Shedding lights on the interrelationship between retirement and wellbeing. By investigating the timing of retirement and its consequences for wellbeing, this research addresses potential problems of current pension arrangements, especially for those with very fragile work trajectories. Moreover, understanding the changes of older people's health and subjective well-being related to retirement, we will identify policy contexts which favour successful transitions between work and retirement.
- 4) Illuminating on the implications of ageing without kin. The share of older adults who have few kin alive, whose kin live far away or are engaged in full-time work is likely to increase in the near future. Understanding the care needs of this growing population is crucial for the design of social policies. We will inform policy makers on how older adults without kin fare under different welfare regime.



### SUMMARY

Our research covers four broad topics. First, we investigate the determinants of health and wellbeing in older age and critically examine old and new measures.

Second, we describe patterns of caregiving and the impact of providing care on the wellbeing of caregivers.

Third, we analyse the challenges faced by pension systems as consequence of changes in family dynamics and work patterns.

Finally, we examine the population of older adults without close kin, analyse its characteristics, and how the welfare state shapes their well-being.

Gender and welfare policies are transversal themes of each topic, as they shape all of the dynamics analysed.

<https://crew-more-years-better-lives.org/>

CREW fills key policy-relevant gaps in existing research, ultimately contributing to knowledge which inform policies to guarantee high quality of ageing and equal opportunities for successful ageing for both men and women and for people of different socio-economic groups.

### CONSORTIUM

CREW consists of a team of 6 partners:

1. Pompeu Fabra University, Spain (coordinator; PI: Bruno Arpino)
2. Netherlands Interdisciplinary Demographic Institute, Netherlands (PI: Anne Gauthier)
3. Université Catholique de Louvain, Belgium (PI: Ester Rizzi)
4. University of Florence, Italy (PI: Gustavo De Santis)
5. University of Padua, Italy (PI: Maria Letizia Tanturri)
6. University of Western Ontario, Canada (PI: Rachel Margolis).

Our researchers bring theoretical and methodological expertise from different disciplines: demography, sociology, social policy, economics and social statistics.

